



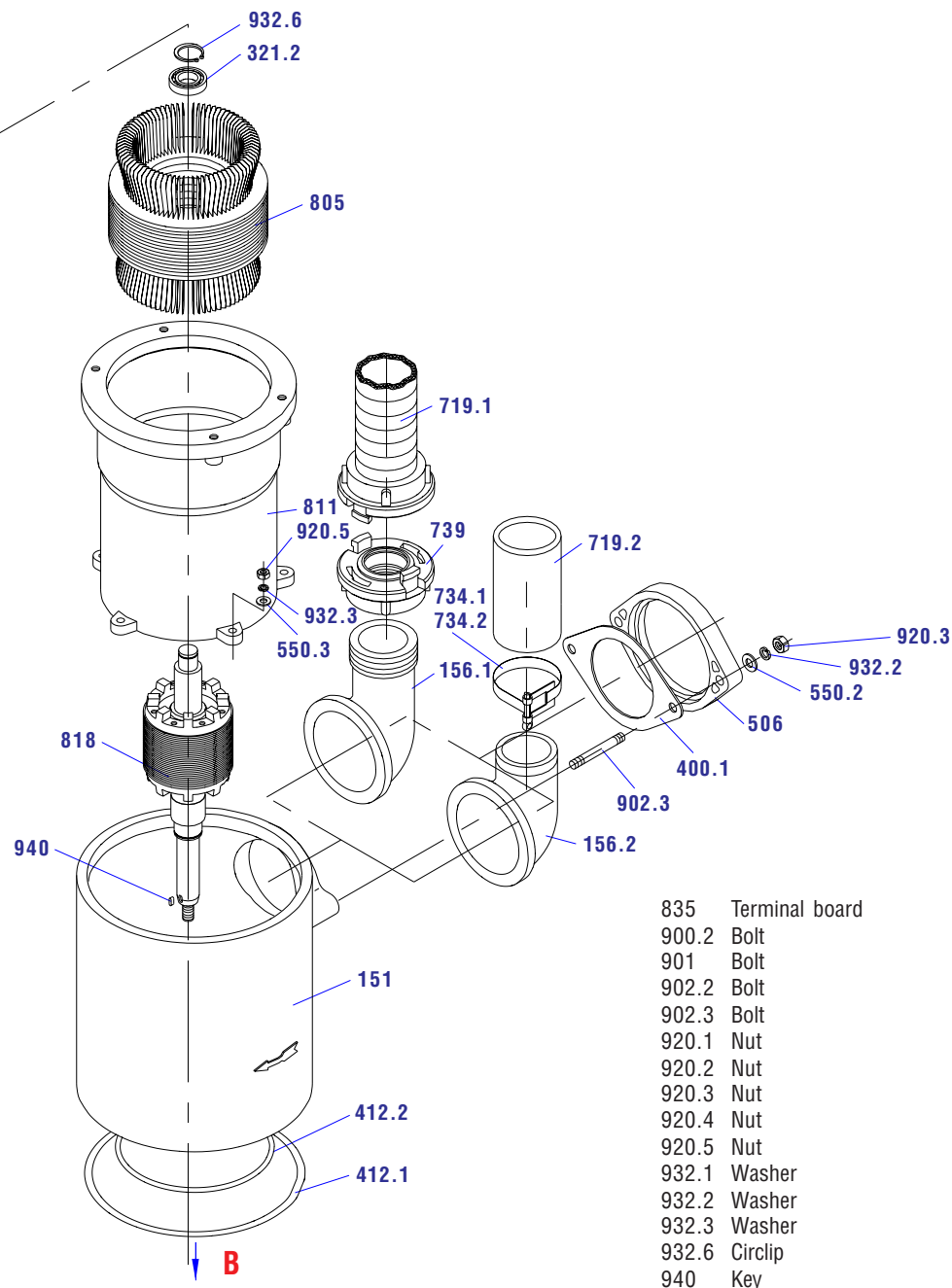
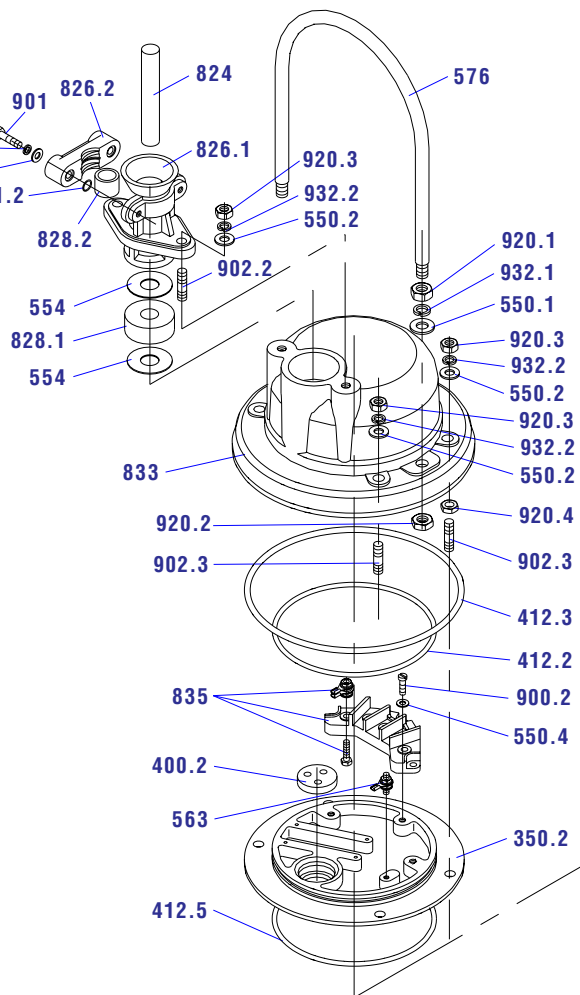
65-KDFU-130

A

Submersible pumps

Assembly drawing „A“

- 151 Pump shell
- 156.1 Discharge elbow
- 156.2 Discharge elbow
- 321.2 Bearing
- 350.2 Upper bearing housing
- 400.1 Discharge elbow packing
- 400.2 Joint disc
- 411.2 Wear ring
- 412.1 Ring
- 412.2 Ring
- 412.3 Ring
- 412.5 Ring
- 506 Discharge elbow flange
- 550.1 Washer
- 550.2 Washer
- 550.3 Washer
- 550.4 Washer
- 554 Washer
- 563 Earthing clip
- 576 Handle
- 719.1 Hose
- 719.2 Hose
- 734.1 Clip
- 734.2 Strip
- 739 Fast coupling
- 805 Stator
- 811 Stator casing
- 818 Rotor
- 824 Cable
- 826.1 Cable bushing
- 826.2 Bushing yoke
- 828.1 Bushing rubber liner
- 828.2 Bushing rubber liner
- 833 Terminal board cover



- 835 Terminal board
- 900.2 Bolt
- 901 Bolt
- 902.2 Bolt
- 902.3 Bolt
- 920.1 Nut
- 920.2 Nut
- 920.3 Nut
- 920.4 Nut
- 920.5 Nut
- 932.1 Washer
- 932.2 Washer
- 932.3 Washer
- 932.6 Circlip
- 940 Key



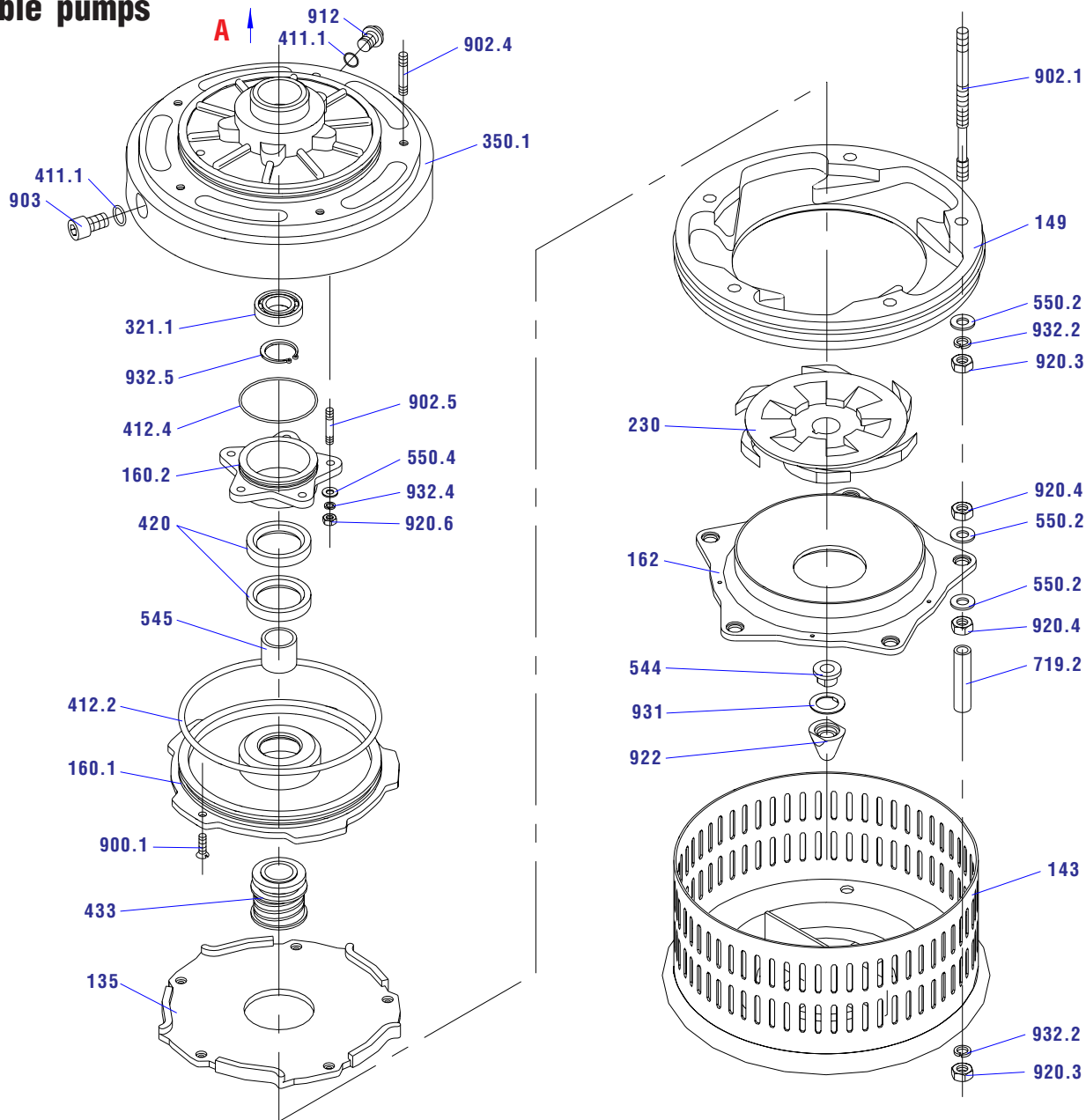
65-KDFU-130

B

Submersible pumps

Assembly drawing „B“

- 135 Impeller plate
- 143 Suction strainer
- 149 Diffuser
- 160.1 Oil pool bottom
- 160.2 Bearing cover
- 162 Suction cover
- 230 Impeller
- 321.1 Bearing
- 350.1 Lower bearing housing
- 411.1 Wear ring
- 412.2 Ring
- 412.4 Ring
- 420 Radial lip seal „gufero“
- 433 Mechanical seal
- 544 Sliding sleeve
- 545 Shaft sleeve
- 550.2 Washer
- 550.4 Washer
- 719.2 Rubber protection of bolts
- 900.1 Bolt
- 902.1 Bolt
- 902.4 Bolt
- 902.5 Bolt
- 903 Checking bolt
- 912 Plug
- 920.3 Nut
- 920.4 Nut
- 920.6 Nut
- 922 Impeller nut
- 931 Lock washer
- 932.2 Washer
- 932.4 Washer
- 932.5 Circlip





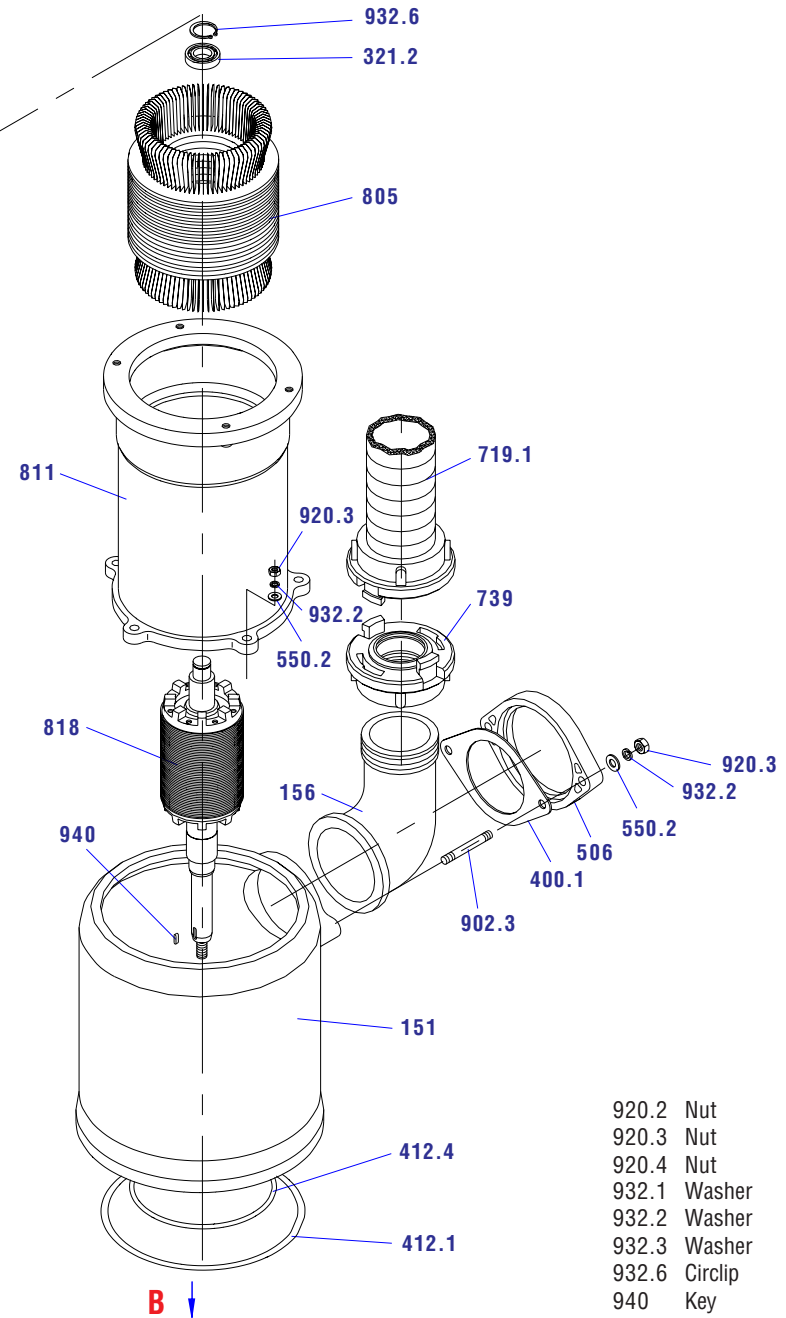
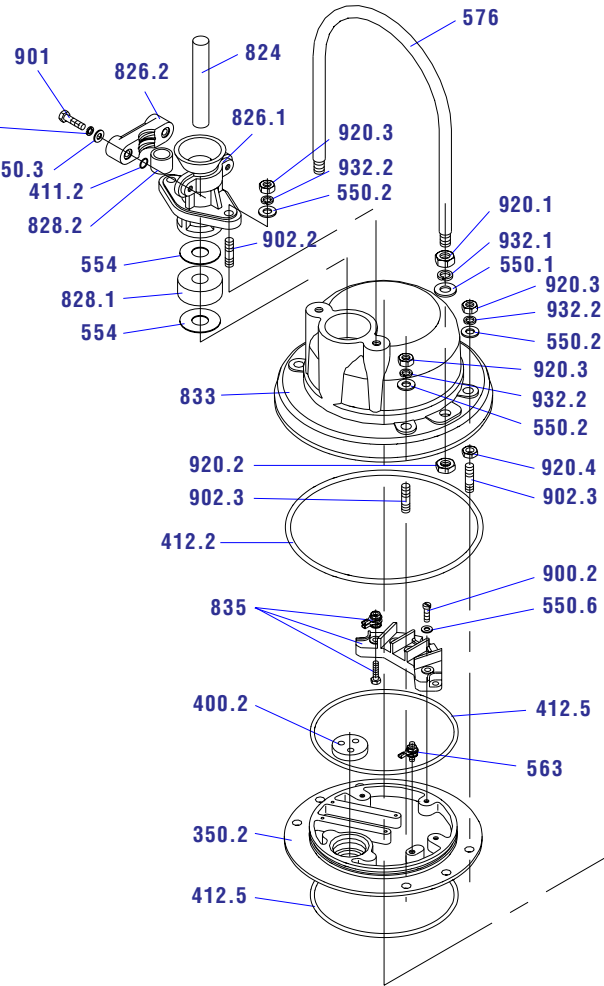
**80-KDFU -130
-150**

A

Submersible pumps

Assembly drawing „A“

- 151 Pump shell
- 156 Discharge elbow
- 321.2 Bearing
- 350.2 Upper bearing housing
- 400.1 Discharge elbow packing
- 400.2 Joint disc
- 411.2 Wear ring
- 412.1 Ring
- 412.2 Ring
- 412.4 Ring
- 412.5 Ring
- 506 Discharge elbow flange
- 550.1 Washer
- 550.2 Washer
- 550.3 Washer
- 550.6 Washer
- 554 Washer
- 563 Earthing clip
- 576 Handle
- 719.1 Hose
- 739 Fast coupling
- 805 Stator
- 811 Stator casing
- 818 Rotor
- 824 Cable
- 826.1 Cable bushing
- 826.2 Bushing yoke
- 828.1 Bushing rubber liner
- 828.2 Bushing rubber liner
- 833 Terminal board cover
- 835 Terminal board
- 900.2 Bolt
- 901 Bolt
- 902.3 Bolt
- 920.1 Nut



- 920.2 Nut
- 920.3 Nut
- 920.4 Nut
- 932.1 Washer
- 932.2 Washer
- 932.3 Washer
- 932.6 Circlip
- 940 Key



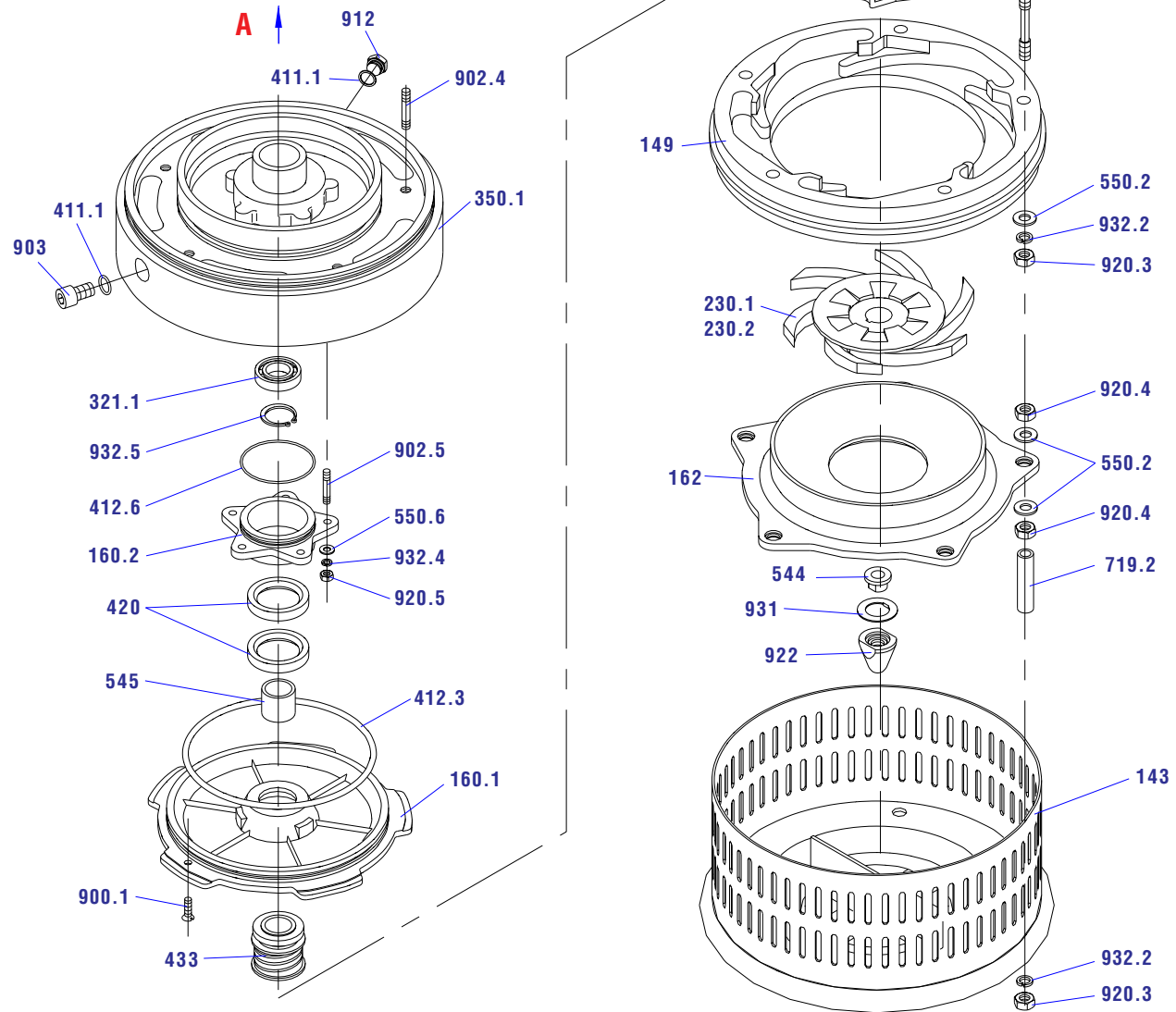
80-KDFU -130
-150

B

Submersible pumps

Assembly drawing „B“

- 135 Impeller plate
- 143 Suction strainer
- 149 Diffuser
- 160.1 Oil pool bottom
- 160.2 Bearing cover
- 162 Suction cover
- 230.1 Impeller
- 230.2 Impeller
- 321.1 Bearing
- 350.1 Lower bearing housing
- 411.1 Wear ring
- 412.3 Ring
- 412.6 Ring
- 420 Radial lip seal „gufero“
- 433 Mechanical seal
- 544 Sliding sleeve
- 545 Shaft sleeve
- 550.2 Washer
- 550.6 Washer
- 719.2 Rubber protection of bolts
- 900.1 Bolt
- 902.1 Bolt
- 902.4 Bolt
- 902.5 Bolt
- 903 Checking bolt
- 912 Plug
- 920.3 Nut
- 920.4 Nut
- 920.5 Nut
- 922 Impeller nut
- 931 Lock washer
- 932.2 Washer
- 932.4 Washer
- 932.5 Circlip





100-KDFU-150

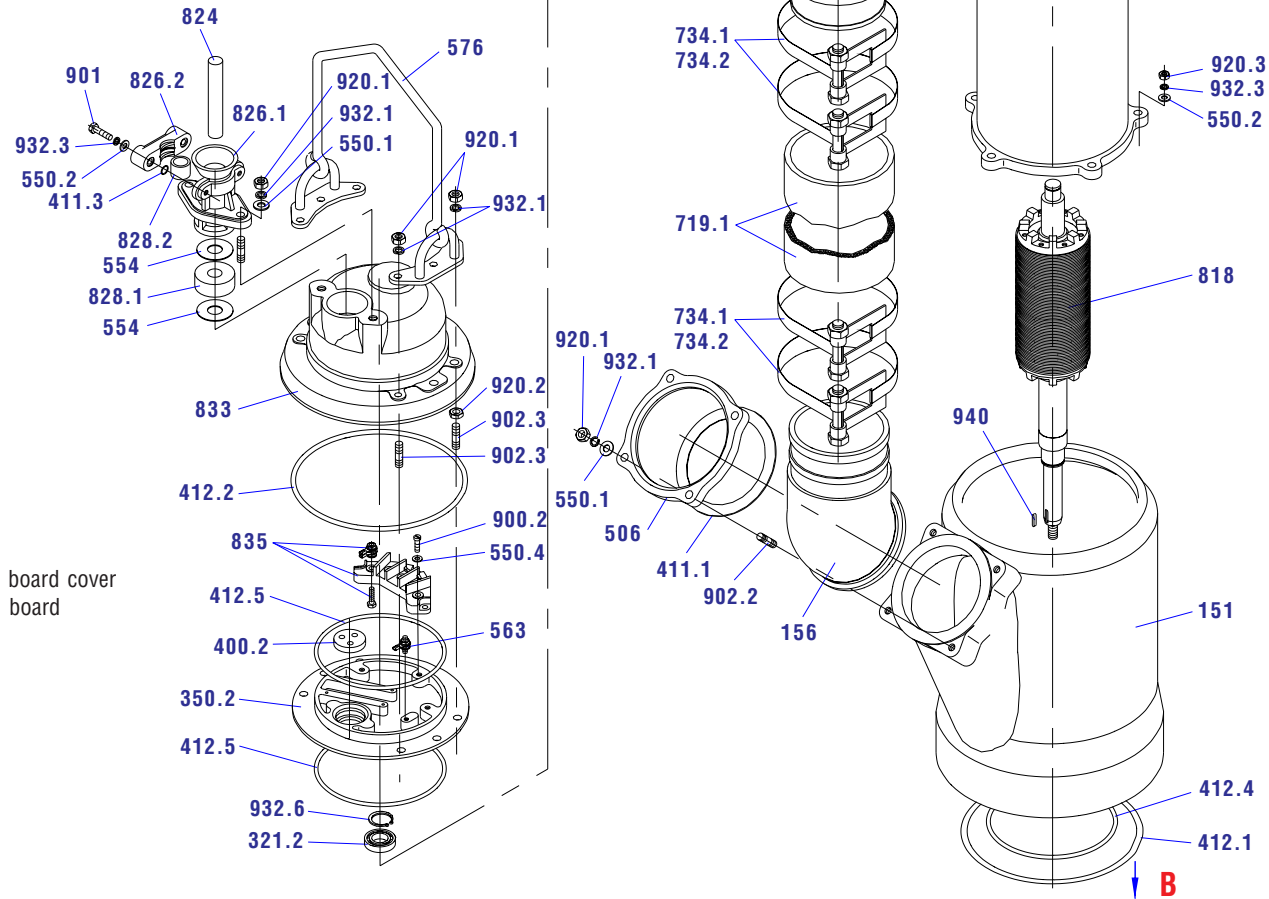
A

Submersible pumps

Assembly drawing „A“

- 151 Pump shell
- 156 Discharge elbow
- 321.2 Bearing
- 350.2 Upper bearing housing
- 400.2 Joint disc
- 411.1 Wear ring
- 411.3 Wear ring
- 412.1 Ring
- 412.2 Ring
- 412.4 Ring
- 412.5 Ring
- 506 Discharge elbow flange
- 550.1 Washer
- 550.2 Washer
- 550.3 Washer
- 550.4 Washer
- 554 Washer
- 563 Earthing clip
- 576 Handle
- 719.1 Hose
- 731 Screw joint
- 734.1 Clip
- 734.2 Strip
- 805 Stator
- 811 Stator casing
- 818 Rotor
- 824 Cable
- 826.1 Cable bushing
- 826.2 Bushing yoke
- 828.1 Bushing rubber liner
- 828.2 Bushing rubber liner

- 833 Terminal board cover
- 835 Terminal board
- 900.2 Bolt
- 901 Bolt
- 902.2 Bolt
- 902.3 Bolt
- 920.1 Nut
- 920.2 Nut
- 920.3 Nut
- 932.1 Washer
- 932.3 Washer
- 932.6 Circlip
- 940 Key



B



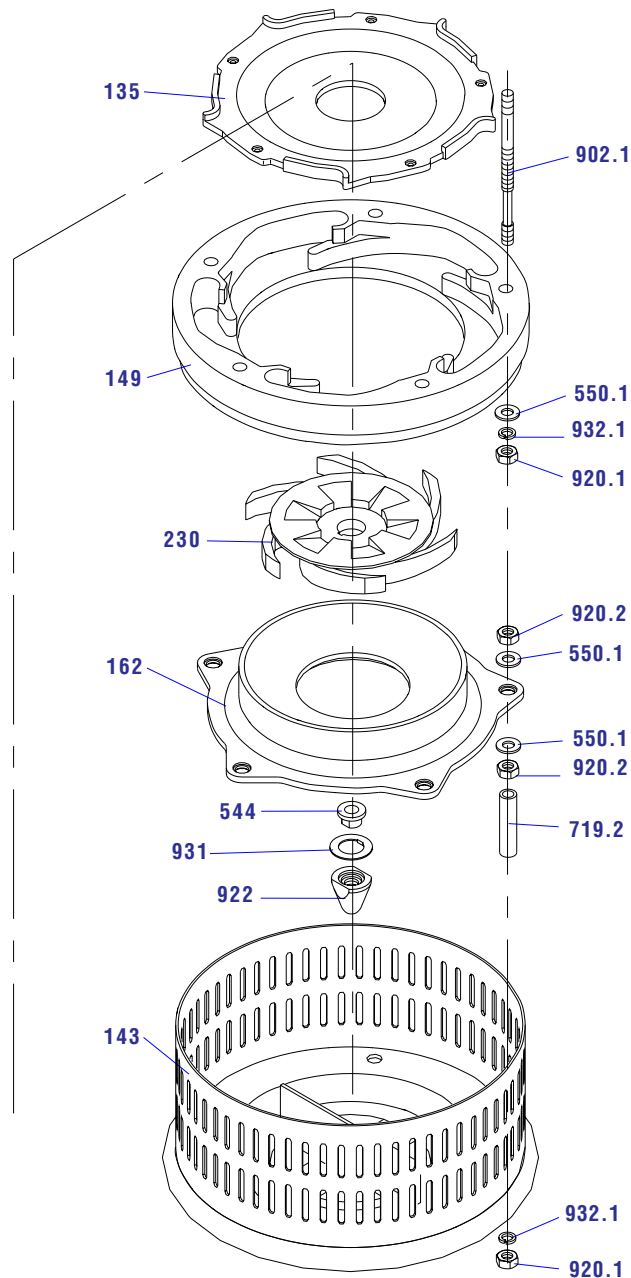
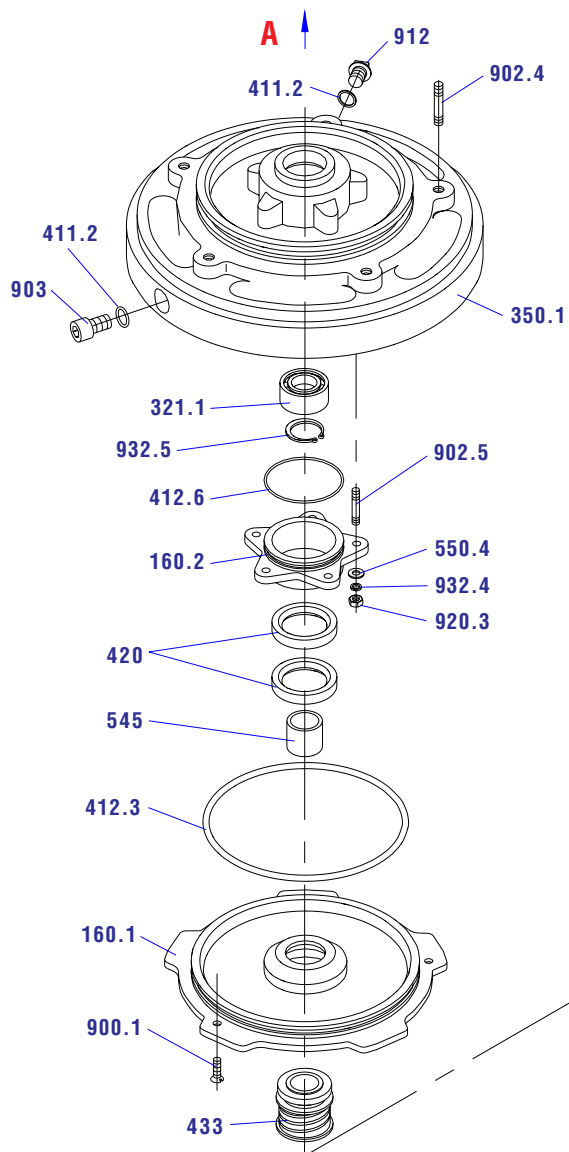
100-KDFU-150

B

Submersible pumps

Assembly drawing „B“

- 135 Impeller plate
- 143 Suction strainer
- 149 Diffuser
- 160.1 Oil pool bottom
- 160.2 Bearing cover
- 162 Suction cover
- 230 Impeller
- 321.1 Bearing
- 350.1 Lower bearing housing
- 411.1 Wear ring
- 412.3 Ring
- 412.6 Ring
- 420 Radial lip seal „gufero“
- 433 Mechanical seal
- 544 Sliding sleeve
- 545 Shaft sleeve
- 550.1 Washer
- 550.4 Washer
- 719.2 Rubber protection of bolts
- 900.1 Bolt
- 902.1 Bolt
- 902.4 Bolt
- 902.5 Bolt
- 903 Checking bolt
- 912 Plug
- 920.1 Nut
- 920.2 Nut
- 920.3 Nut
- 922 Impeller nut
- 931 Lock washer
- 932.1 Washer
- 932.4 Washer
- 932.5 Circlip





125-KDFU-170

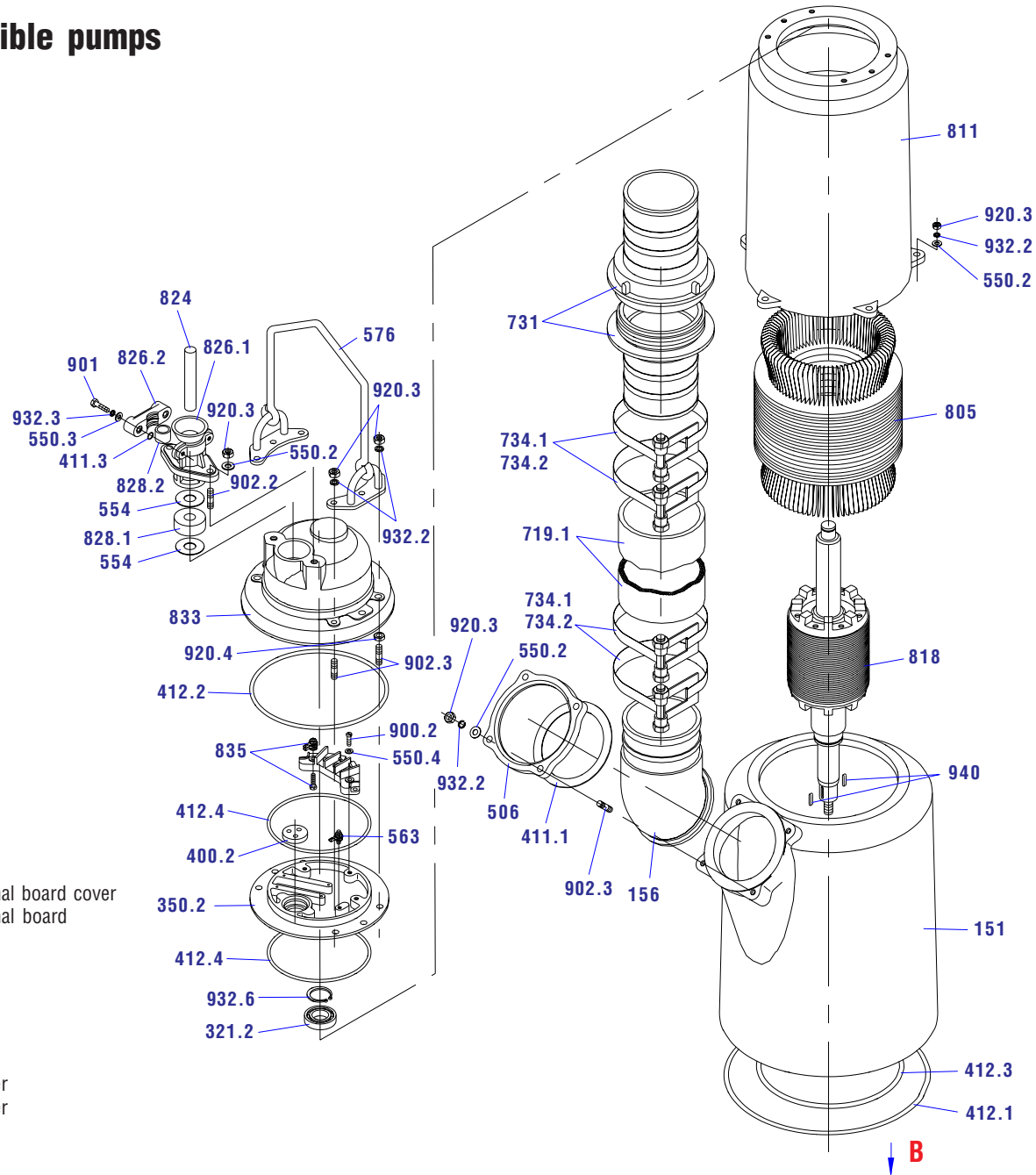
A

Submersible pumps

Assembly drawing „A“

- 151 Pump shell
- 156 Discharge elbow
- 321.2 Bearing
- 350.2 Upper bearing housing
- 400.2 Joint disc
- 411.1 Wear ring
- 411.3 Wear ring
- 412.1 Ring
- 412.2 Ring
- 412.3 Ring
- 412.4 Ring
- 506 Discharge elbow flange
- 550.2 Washer
- 550.3 Washer
- 550.4 Washer
- 554 Washer
- 563 Earthing clip
- 576 Handle
- 719.1 Hose
- 731 Screw joint
- 734.1 Clip
- 734.2 Strip
- 805 Stator
- 811 Stator casing
- 818 Rotor
- 824 Cable
- 826.1 Cable bushing
- 826.2 Bushing yoke
- 828.1 Bushing rubber liner
- 828.2 Bushing rubber liner

- 833 Terminal board cover
- 835 Terminal board
- 900.2 Bolt
- 901 Bolt
- 902.2 Bolt
- 902.3 Bolt
- 920.3 Nut
- 920.4 Nut
- 932.2 Washer
- 932.3 Washer
- 932.6 Circlip
- 940 Key





125-KDFU-170

B

Submersible pumps

Assembly drawing „B“

- 135 Impeller plate
- 143 Suction strainer
- 149 Diffuser
- 160.1 Oil pool bottom
- 160.2 Bearing cover
- 162 Suction cover
- 230 Impeller
- 321.1 Bearing
- 350.1 Lower bearing housing
- 411.2 Wear ring
- 412.2 Ring
- 412.5 Ring
- 420 Radial lip seal „gufero“
- 433 Mechanical seal
- 544 Sliding sleeve
- 545 Shaft sleeve
- 550.1 Washer
- 550.4 Washer
- 551 Flat ring / gasket
- 719.2 Rubber protection of bolts
- 900.1 Bolt
- 902.1 Bolt
- 902.4 Bolt
- 902.5 Bolt
- 903 Checking bolt
- 912 Plug
- 920.1 Nut
- 920.2 Nut
- 920.3 Nut
- 922 Impeller nut
- 931 Lock washer
- 932.1 Washer
- 932.4 Washer
- 932.5 Circlip

