

## NOCCHI VACUSYSTEM WASTEWATER COLLECTION AND LIFTING SYSTEMS

VACUSYSTEM 200 are automatic pumping stations already assembled and ready for use. Particularly suitable when the water coming from drains is collected at a lower level from the main sewer. Assembled with submersible pumps of the PRIOX series.

### MOTOR

- Dry running.
- Degree of protection IP68
- Insulation class F
- Single-phase power supply with capacitor permanently on and thermal protection built into the motor casing.
- Cable connection chamber completely insulated
- Self-lubricating ball bearings
- Speed of rotation 2850 rpm.

### USAGE DATA

- Type of liquid: wastewater with suspended solids of dimensions max. 40 mm
- Maximum temperature of the liquid 40°C
- Minimum drying level 60 mm
- Treadable cover

### CONSTRUCTION FEATURES

- The standard pumping station consists of:
- Tank: in polyethylene with a capacity of 175 l, with a cover complete with gasket that ensures the seal of the liquid and any gas formations.
- DN 110 input manifolds, output in PVC 2" and vent pipe connection DN 50.
- Submersible pump PRIOX 300/9 M AUT, PRIOX 460/13 M AUT



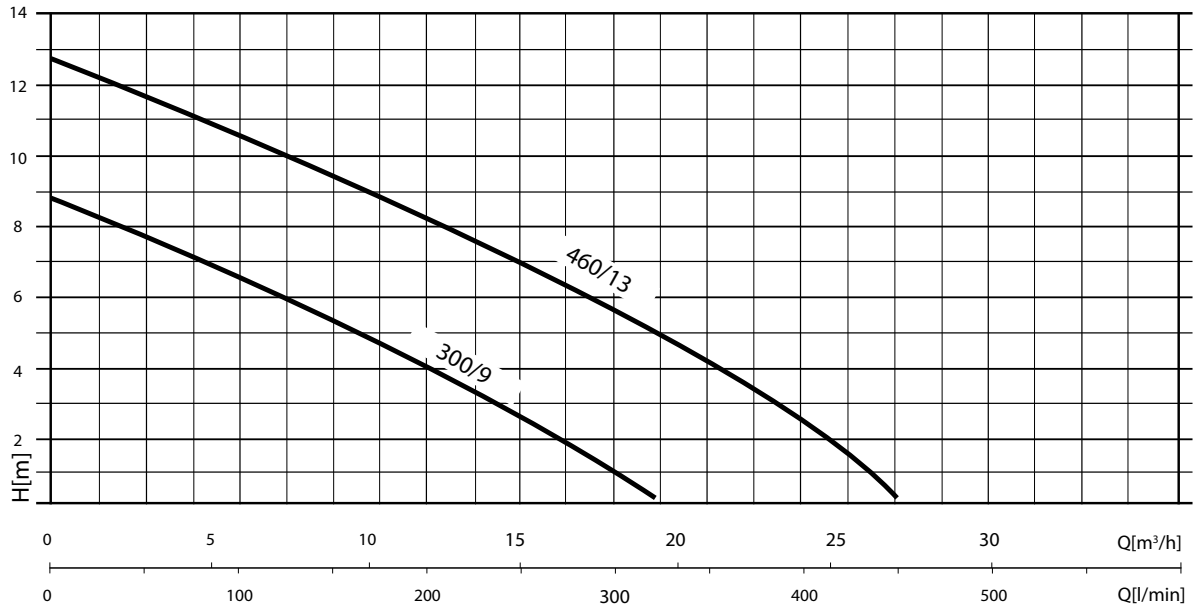
### TABLE OF MATERIALS

Component		Material
1	Pump body	Stainless steel X5 CrNi 1810 (AISI 304)
2	Air inlet base	Stainless steel X5 CrNi 1810 (AISI 304)
3	Impeller	Stainless steel X5 CrNi 1810 (AISI 304) casting
4	Supply cable	10 m H07 RN-F
5	Motor shaft	Stainless steel X 12 CrNiS 1809 (AISI 416)
6	Mechanical seal	Graphite
7	Counterface	Ceramic
8	Secondary seal	rubber NBR lip seal
9	V-ring sand guard	Rubber NBR

# NOCCHI VACUSYSTEM

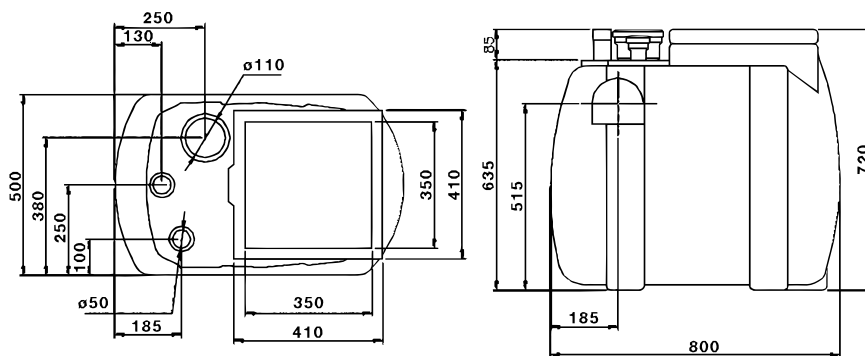
## WASTEWATER COLLECTION AND LIFTING SYSTEMS

### HYDRAULIC PERFORMANCE



### PERFORMANCE TABLE

MODEL	Motor power (P2)		Motor power (P1)		VOLT. (V)	In (A)	μF	Q	L/min	50	100	150	200	150	300	400
	HP	kW	HP	kW					m³/h	3	6	9	12	15	18	24
VS 200-P 300	0.8	0.6	1.2	0.9	1 ~ 230	4.1	12.5	m.c.a./ m.c.w.	7.7	6.4	5	3.8	2.3	1		
VS 200-P 460	1.4	1	2.2	1.6	1 ~ 230	7.2	20		11.8	10.8	9.8	8.5	7	5.5	2	



### OVERALL DIMENSIONS AND WEIGHTS

MODEL	Dimensions in mm:																	Total weight (Kg)
	A	B	C	D	E	F	G	H	I	L	M	N	O	P	Q	R	S	
VS 200 - P 300 M	500	380	250	100	185	250	130	410	350	800	410	350	635	515	720	185	85	27
VS 200 - P 460 M	500	380	250	100	185	250	130	410	350	800	410	350	635	515	720	185	85	29.2

# NOCCHI VACUSYSTEM

## WASTEWATER COLLECTION AND LIFTING SYSTEMS

### DESCENT DEVICE

VACUSYSTEM 200 S are automatic pumping stations already assembled and ready for use. Particularly suitable when the water coming from drains is collected at a lower level from the main sewer. Assembled with submersible pumps of the PRIOX series.

#### MOTOR

- Dry running.
- Degree of protection IP68
- Insulation class F
- Single-phase power supply with capacitor permanently on and thermal protection built into the motor casing.
- Cable connection chamber completely insulated
- Self-lubricating ball bearings
- Speed of rotation 2850 rpm.

#### USAGE DATA

- Type of liquid: wastewater with suspended solids of dimensions max. 40 mm
- Maximum temperature of the liquid 40°C
- Minimum drying level 60 mm
- Treadable cover

#### CONSTRUCTION FEATURES

- Tank:
- in polyethylene with a capacity of 175 l, with a cover complete with gasket that ensures the seal of the liquid and any gas formations.
- DN 110 input manifolds, output 2" and vent pipe connection DN 50.
- Descent device
- Electrical control and protection panel (for three-phase PUMPS)
- Float with 10 m cable 2x1 H07 RN-F (for three-phase PUMPS)
- Submersible pump: PRIOX 300/9 M AUT, PRIOX 460/13 M AUT, PRIOX 300/9 T, PRIOX 460/13 T



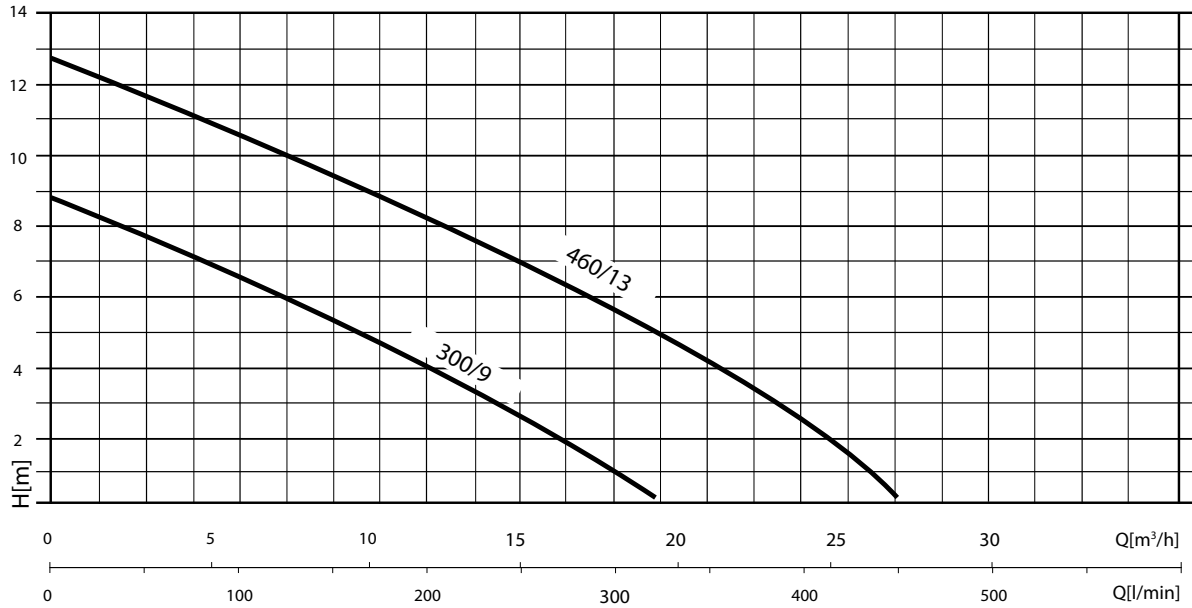
#### TABLE OF MATERIALS

Component		Material
1	Pump body	Stainless steel X5 CrNi 1810 (AISI 304)
2	Air inlet base	Stainless steel X5 CrNi 1810 (AISI 304)
3	Impeller	Stainless steel X5 CrNi 1810 (AISI 304) casting
4	Supply cable	10 m H07 RN-F
5	Motor shaft	Stainless steel X 12 CrNiS 1809 (AISI 416)
6	Mechanical seal	Silicon carbide
7	Counterface	Silicon carbide
8	Secondary seal	rubber NBR lip seal
9	V-ring sand guard	Rubber NBR

# NOCCHI VACUSYSTEM

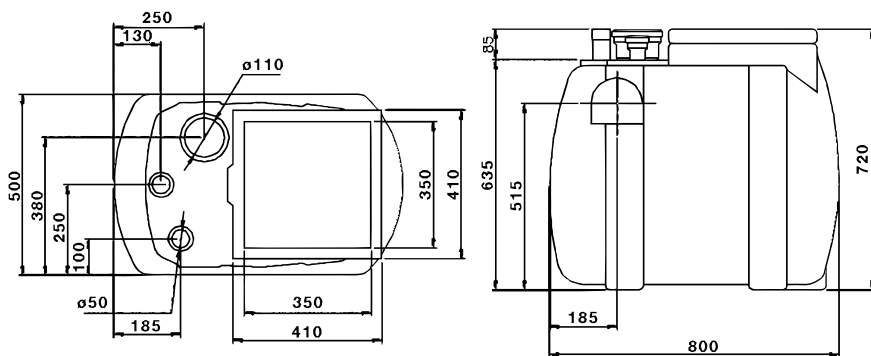
## WASTEWATER COLLECTION AND LIFTING SYSTEMS

### HYDRAULIC PERFORMANCE



### PERFORMANCE TABLE

MODEL	Motor power (P2)		Motor power (P2)		VOLT. (V)	I <sub>n</sub> (A)	μF	Q	l/min m³/h	50	100	150	200	250	300	400
	HP	kW	HP	kW						3	6	9	12	15	18	24
VS 200 S-P 300 M	0.8	0.6	1.2	0.9	1 ~ 230	4.1	12.5	m.c.a. / m.c.w.	7.7	6.4	5	3.8	2.3	1		
VS 200 S-P 300 T	0.8	0.6	1.2	0.9	3 ~ 400	1.55			7.7	6.4	5	3.8	2.3	1		
VS 200 S-P 460 M	1.4	1	2.2	1.6	1 ~ 230	7.2	20		11.8	10.8	9.8	8.5	7	5.5	2	
VS 200 S-P 460 T	1.4	1	2	1.45	3 ~ 400	2.4			11.8	10.8	9.8	8.5	7	5.5	2	



### OVERALL DIMENSIONS AND WEIGHTS

MODEL	Dimensions in mm:																Total weight (Kg)	
	A	B	C	D	E	F	G	H	I	L	M	N	O	P	Q	R		S
VS 200 S - P 300 M	500	380	250	100	185	250	130	410	350	800	410	350	635	515	720	185	85	37
VS 200 S - P 300 T	500	380	250	100	185	250	130	410	350	800	410	350	635	515	720	185	85	39
VS 200 S - P 460 M	500	380	250	100	185	250	130	410	350	800	410	350	635	515	720	185	85	38.8
VS 200 S - P 460 T	500	380	250	100	185	250	130	410	350	800	410	350	635	515	720	185	85	40.6

# NOCCHI VACUSYSTEM

## WASTEWATER COLLECTION AND LIFTING SYSTEMS

2 PUMPS, 2 DESCENT DEVICES, ELECTRICAL CONTROL AND PROTECTION PANEL

VACUSYSTEM 500 are automatic pumping stations already assembled and ready for use. Particularly suitable when the water coming from drains is collected at a lower level from the main sewer. Assembled with submersible pumps of the PRIOX series.

### MOTOR

- Dry running.
- Degree of protection IP68
- Insulation class F
- Single-phase power supply with capacitor permanently on and thermal protection built into the motor casing.
- Cable connection chamber completely insulated
- Self-lubricating ball bearings
- Speed of rotation 2850 rpm.

### USAGE DATA

- Type of liquid: wastewater with suspended solids of dimensions max. 40 mm
- Maximum temperature of the liquid 40°C
- Minimum drying level 60 mm
- Treadable cover



### CONSTRUCTION FEATURES

- Tank:
  - in polyethylene with a capacity of 550 l, with a cover complete with gasket that ensures the seal of the liquid and any gas formations.
  - DN 110 input manifolds, output 2" and vent pipe connection DN 50.
- Descent device
- Electrical control and protection panel (for three-phase PUMPS)
- Float with 10 m cable 2x1 H07 RN-F (for three-phase PUMPS)
- Submersible pump: PRIOX 300/9 M, PRIOX 460/13 M, PRIOX 300/9 T, PRIOX 460/13 T



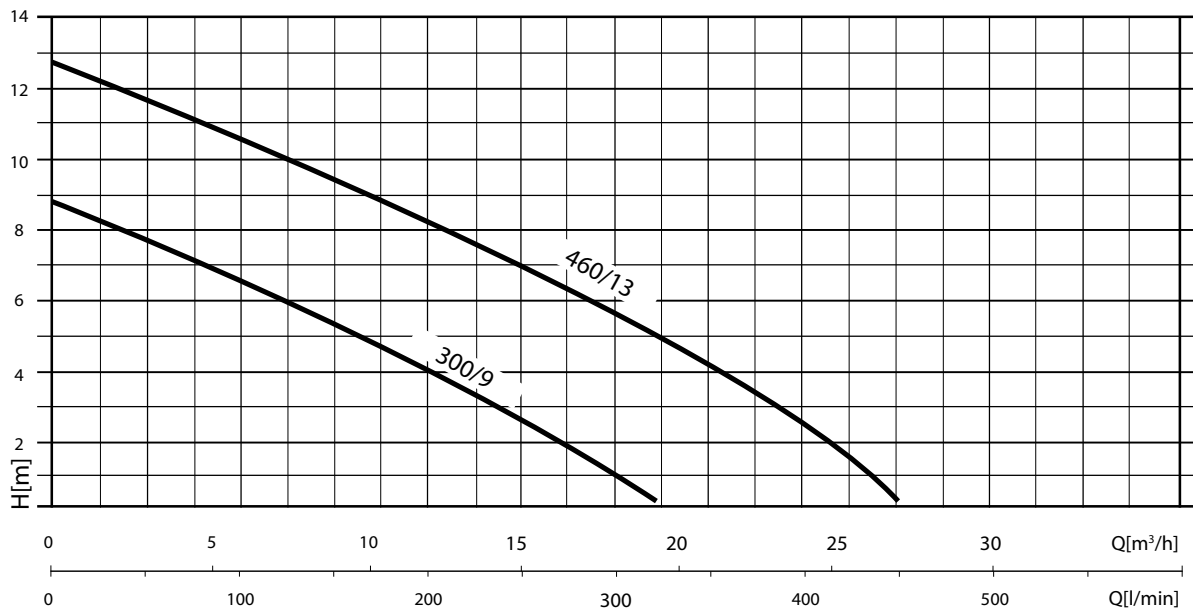
### TABLE OF MATERIALS

Component		Material
1	Pump body	Stainless steel X5 CrNi 1810 (AISI 304)
2	Air inlet base	Stainless steel X5 CrNi 1810 (AISI 304)
3	Impeller	Stainless steel X5 CrNi 1810 (AISI 304) casting
4	Supply cable	10 m H07 RN-F
5	Motor shaft	Stainless steel X 12 CrNiS 1809 (AISI 416)
6	Mechanical seal	Silicon carbide
7	Counterface	Silicon carbide
8	Secondary seal	rubber NBR lip seal
9	V-ring sand guard	Rubber NBR

# NOCCHI VACUSYSTEM

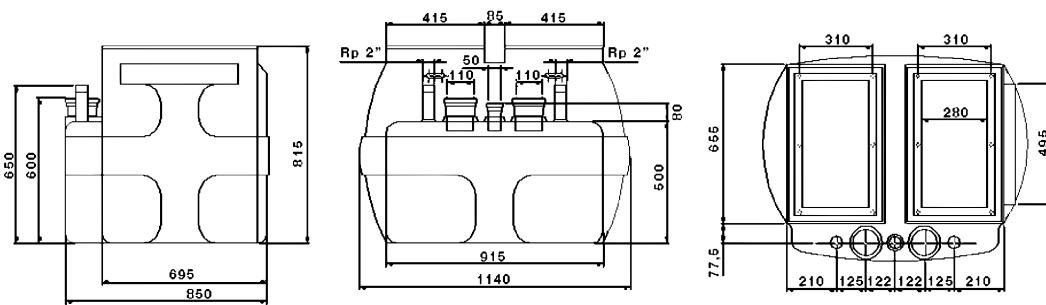
## WASTEWATER COLLECTION AND LIFTING SYSTEMS

### HYDRAULIC PERFORMANCE



### PERFORMANCE TABLE

MODEL	Motor power (P2)		Motor power (P2)		VOLT. (V)	I <sub>n</sub> (A)	μF	Q	m.c.a. / m.c.w.								
	HP	kW	HP	kW					l/min	50	100	150	200	250	300	400	
									3	6	9	12	15	18	24		
VS 500 TWIN-P 300 M	0.8	0.6	1.2	0.9	1 ~ 230	4.1	12.5	m.c.a. / m.c.w.	7.7	6.4	5	3.8	2.3	1			
VS 500 TWIN-P 300 T	0.8	0.6	1.2	0.9	3 ~ 400	1.55			7.7	6.4	5	3.8	2.3	1			
VS 500 TWIN-P 460 M	1.4	1	2.2	1.6	1 ~ 230	7.2	20		11.8	10.8	9.8	8.5	7	5.5	2		
VS 500 TWIN-P 460 T	1.4	1	2	1.45	3 ~ 400	2.4			11.8	10.8	9.8	8.5	7	5.5	2		



### OVERALL DIMENSIONS AND WEIGHTS

MODEL	Dimensions in mm:																Total weight (Kg)
	A	B	C	D	E	F	G	H	I	L	M	N	O	P	Q		
VS 500 TWIN - P 300 M	650	600	695	850	915	500	80	815	415	1140	655	77.5	310	495	280	89.4	
VS 500 TWIN - P 300 T	650	600	695	850	915	500	80	815	415	1140	655	77.5	310	495	280	89.4	
VS 500 TWIN - P 460 M	650	600	695	850	915	500	80	815	415	1140	655	77.5	310	495	280	93.8	
VS 500 TWIN - P 460 T	650	600	695	850	915	500	80	815	415	1140	655	77.5	310	495	280	93.8	